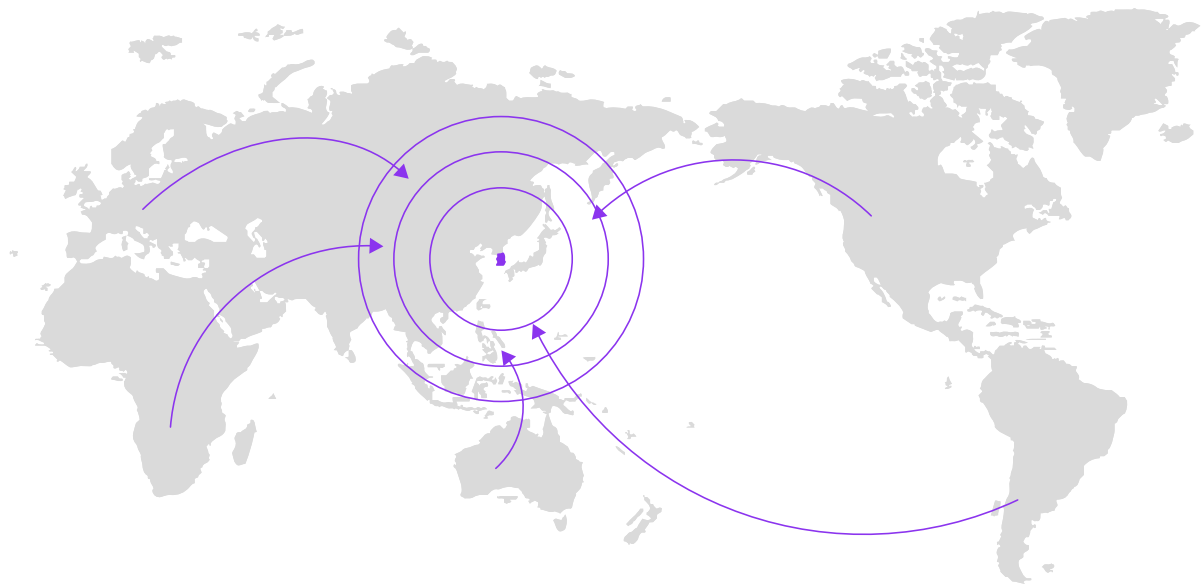


Open Design Competition for the Jeonnam Citizen's Square

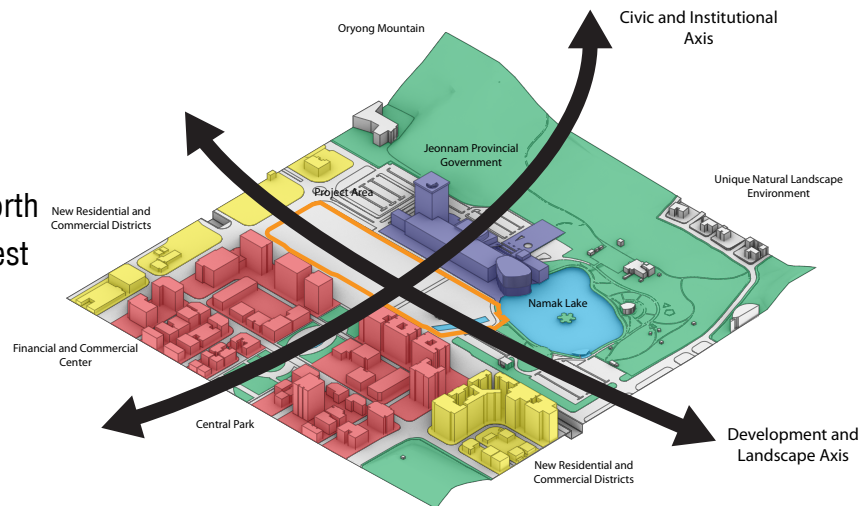
A TALENTS ATTRACTOR



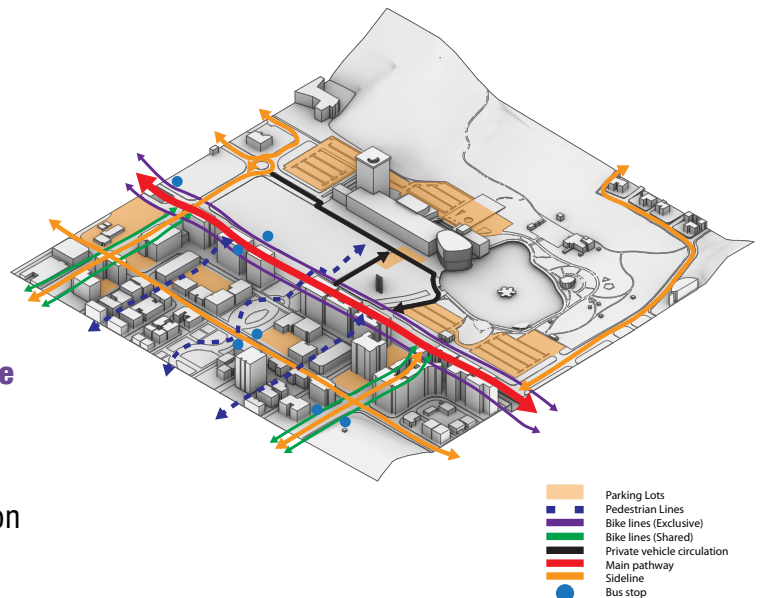
K K 2 B A S

SITE ANALYSIS

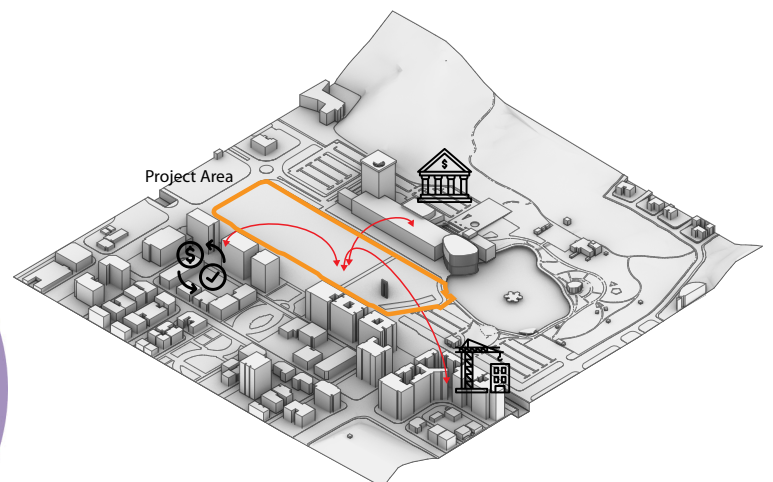
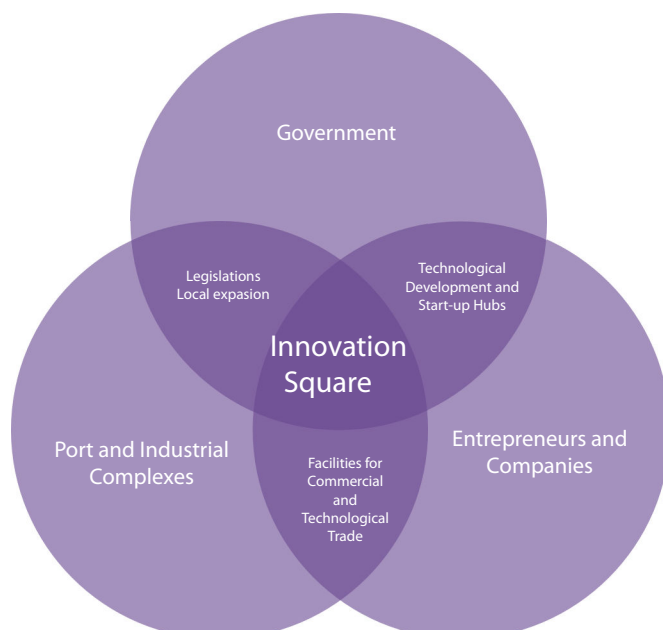
The site is organized between two axes from north to south in a **parkway axis** and from east to west in a **development axis** which follows the real estate growth in the sector.



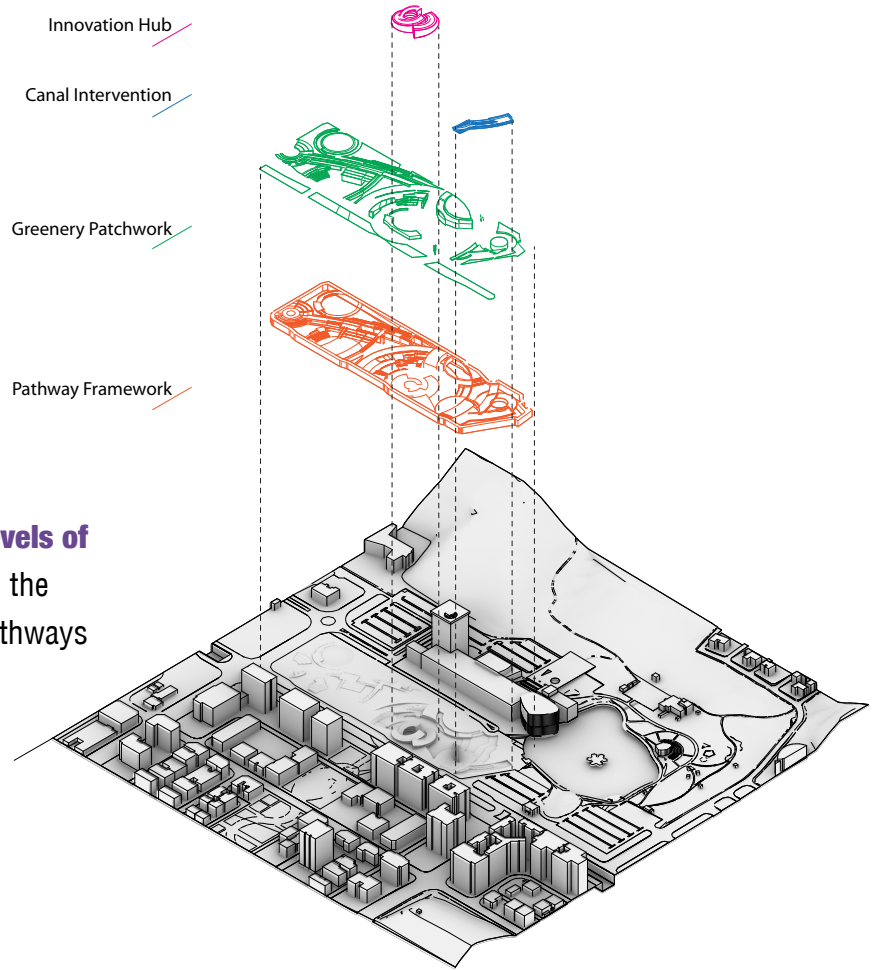
The current mobility offer in the area is mainly composed of private vehicles. The site is connected with the city by public transportation lines and bicycle pathways. Also exclusive and shared pedestrian streets are observed nearby.



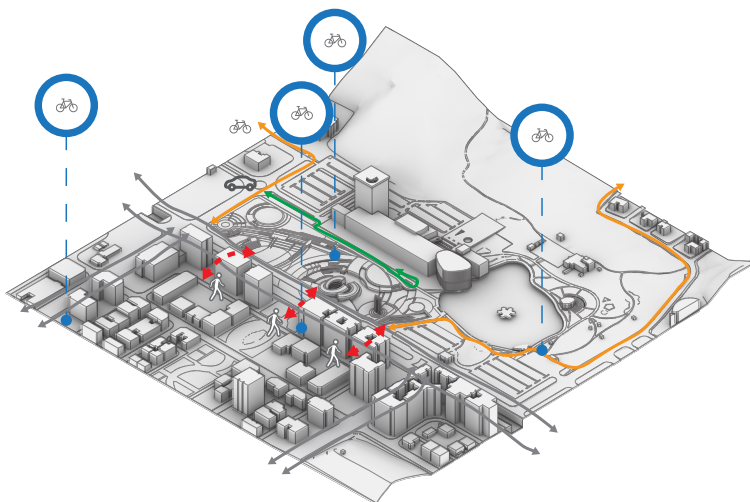
The main actors in this project are involved in the value generation chain of the region. **The most active participation will be made up of entrepreneurs, merchants and professionals** who need to develop new projects or technologies generating an incubation hub for startups and entrepreneurs.



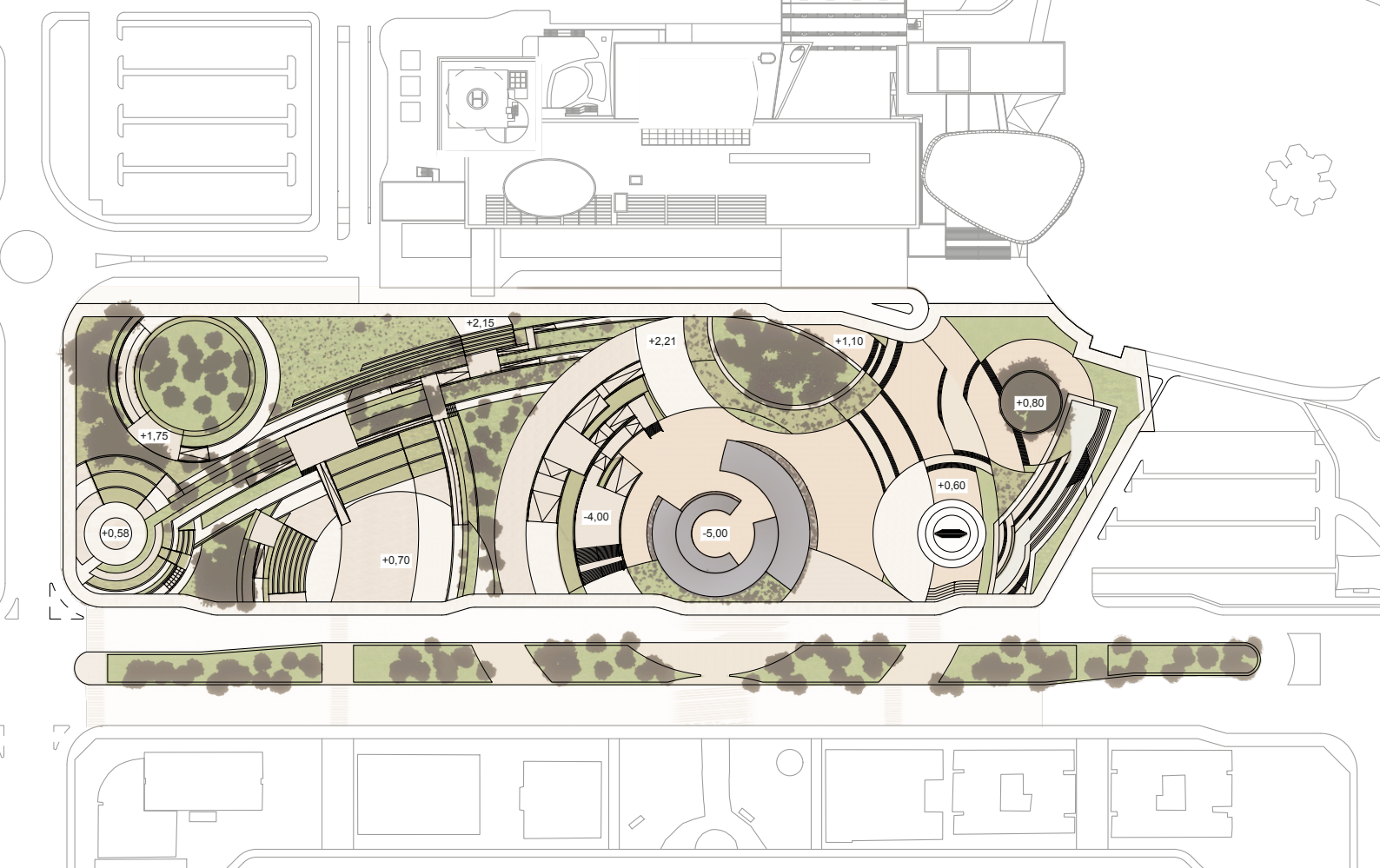
LANDSCAPE LANDMARK



The project's morphology explore different **levels of contemplation** from pedestrians, drivers and the occupants of nearby buildings. A series of pathways are developed with different elevations and accessibility for all users.

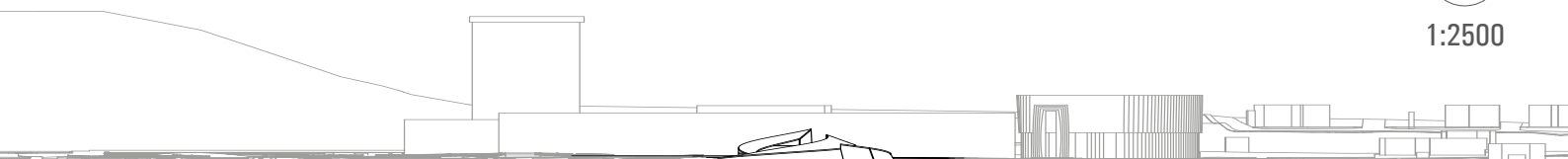


The proposal includes the diversification of the current offer of mobility towards an active network, limiting the circulation of vehicles in the park, the expansion of the cycle path network and the creation of **a free bicycle rental system within a range of 1km from the park**. Looking forward to reduce the use of private vehicles and the overall environmental impact in the área. Aim to an attractive district for new professionals and families to settle in the coming years.

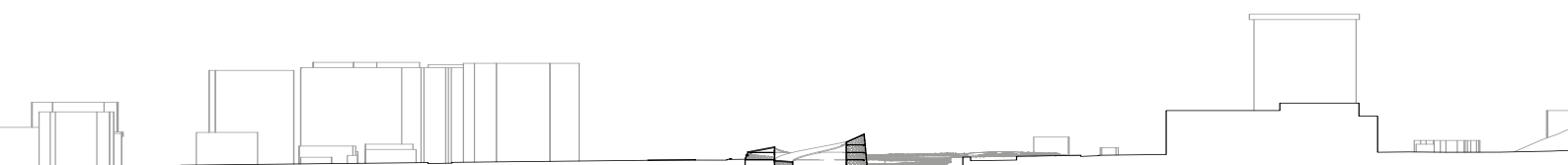


Master Plan

1:2500



South Elevation



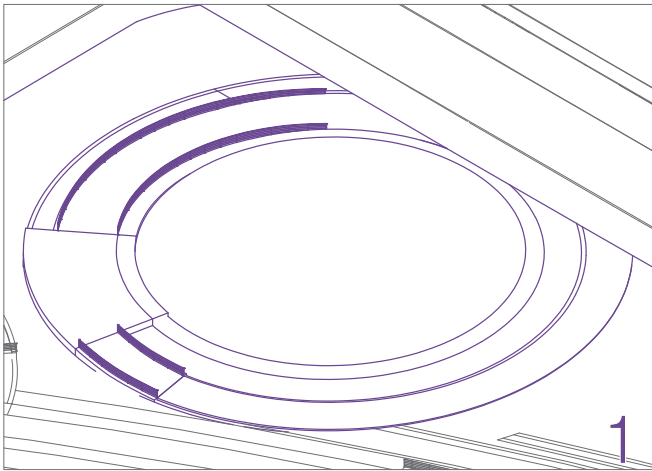
Section

The proposal completes the parkway and the development axis by generating a node between them, creating **a formal dialogue with the government building** and the natural landscape of the hills.

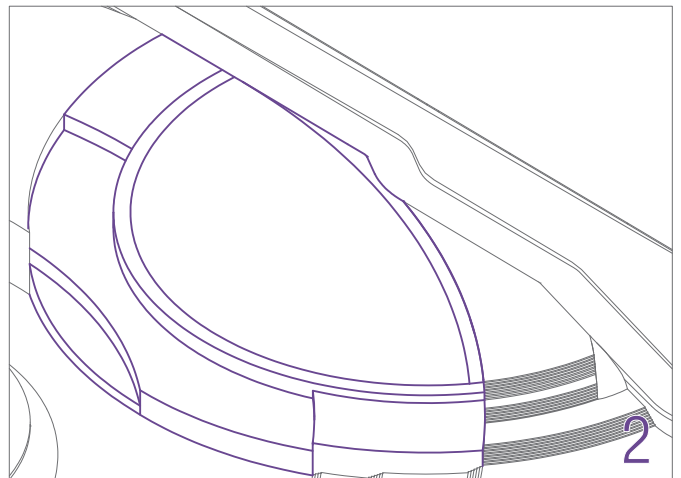
The system of polycentric circles connects the different programs along the square with a semi-buried central plaza which serves as an **open hall to the Innovation Hub** giving a remarkable character to the north-south axis.

Landscape

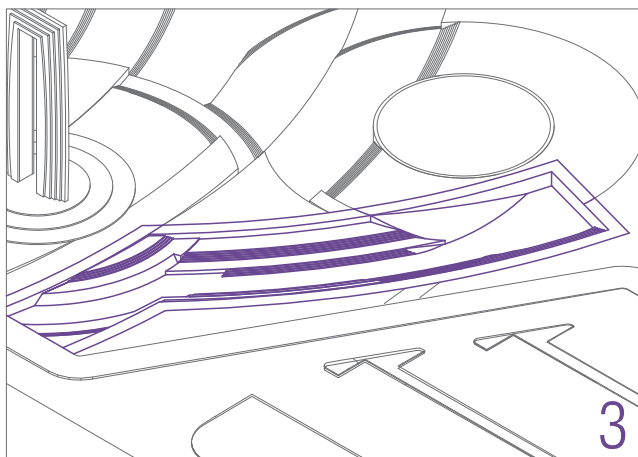
The incorporation of regional vegetation and flora is contemplated due their low maintenance and the preservation of native species, and the **relocation of the existing tree** specimens.



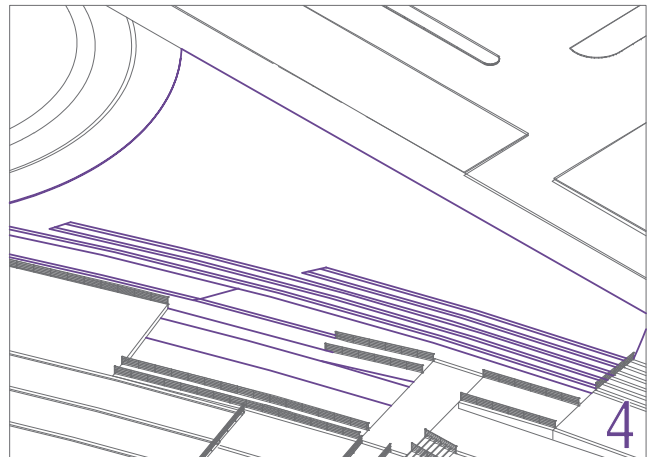
Forest Hill



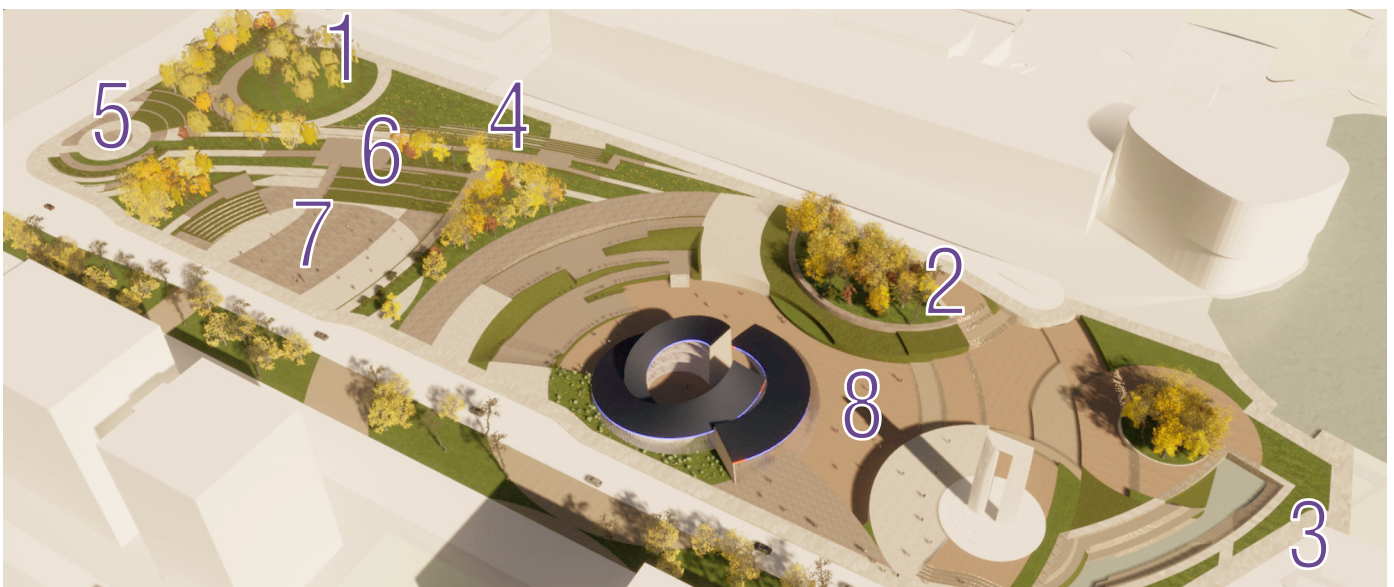
Terraza Garden



Active Canal

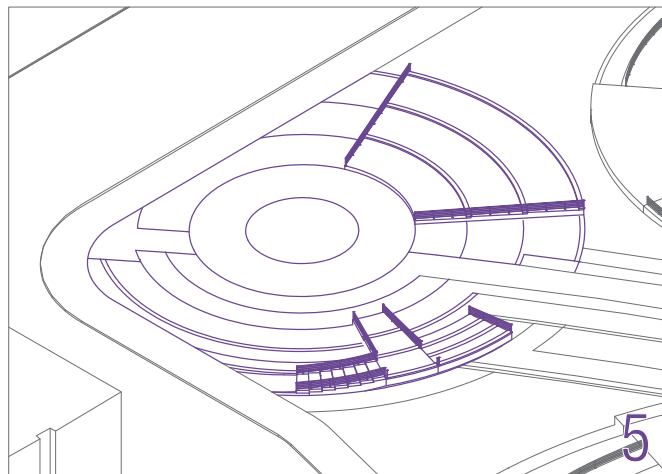


Sensory Garden





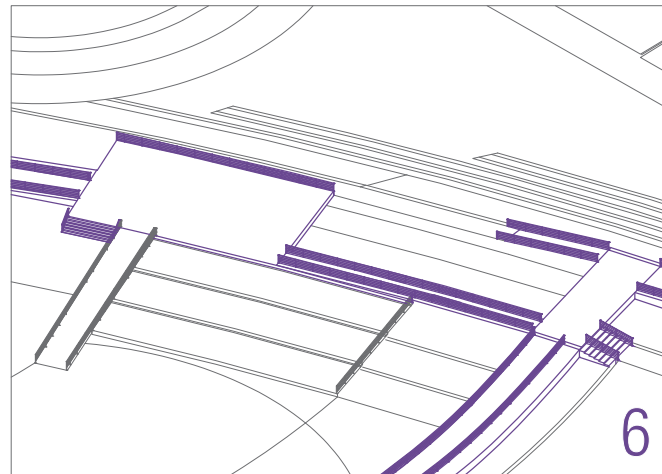
The southwest corner is one of the main reception point, an area for installations and performing activities.



Performance Plaza



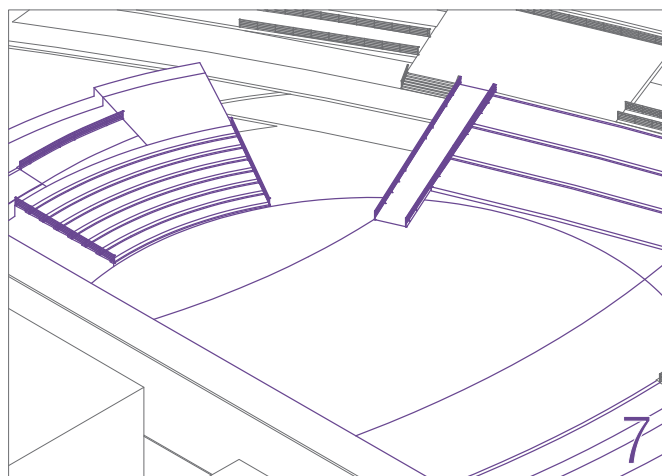
Informal meetings such as gastronomy fairs and preview events can be held on the platforms that can easily be outfitted with ephemeral equipment.



Gathering Platforms



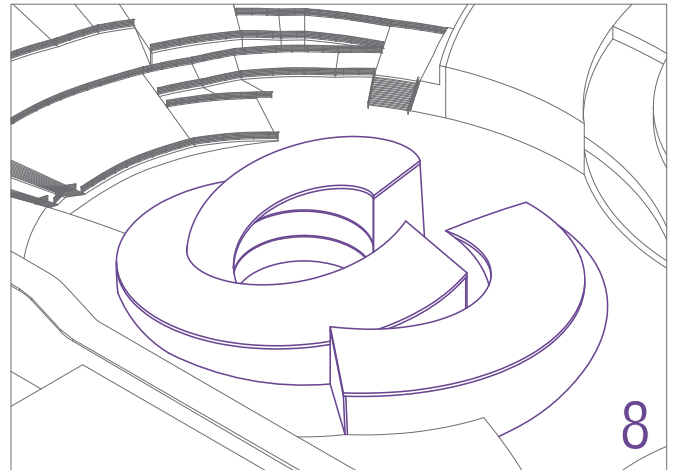
This plaza is equipped to hold musical events in the open air to promote the participation of audiences of different ages.



Amphyteatre Plaza

Innovation Hub

A center designed for the development of entrepreneurs, equipped with laboratories, auditoriums, classrooms, workshop spaces, library, coffe shops, meeting points, terraces and gastronomy establishments.



Research & entrepreneurship

