



**the
stage
of
life** riverside
park
Banja Luka

gathering place

New air

The park is proposed as a social meeting point that finds in nature a generator of value for Banja Luka.

Preexistences

The traces of the old uses are preserved by reconvertng the soil and creating new functions.

Function

The park hosts different functions being a urban center for recreational, sports, artistic, cultural, commercial activities, leisure and landscaping icon.

Connections

Another spot light of the project is the incorporation of a new railway station to improve connectivity with cities nearby, reinforcing Banja Luka's leadership in the territory and stimulate the activity in the commercials center and with the university close by.

Morfology

The fusion between a morphology sharpened by the human logic and the native vegetation that expresses itself naturally on the ground, becoming the bases that shaped this project.

Landmark

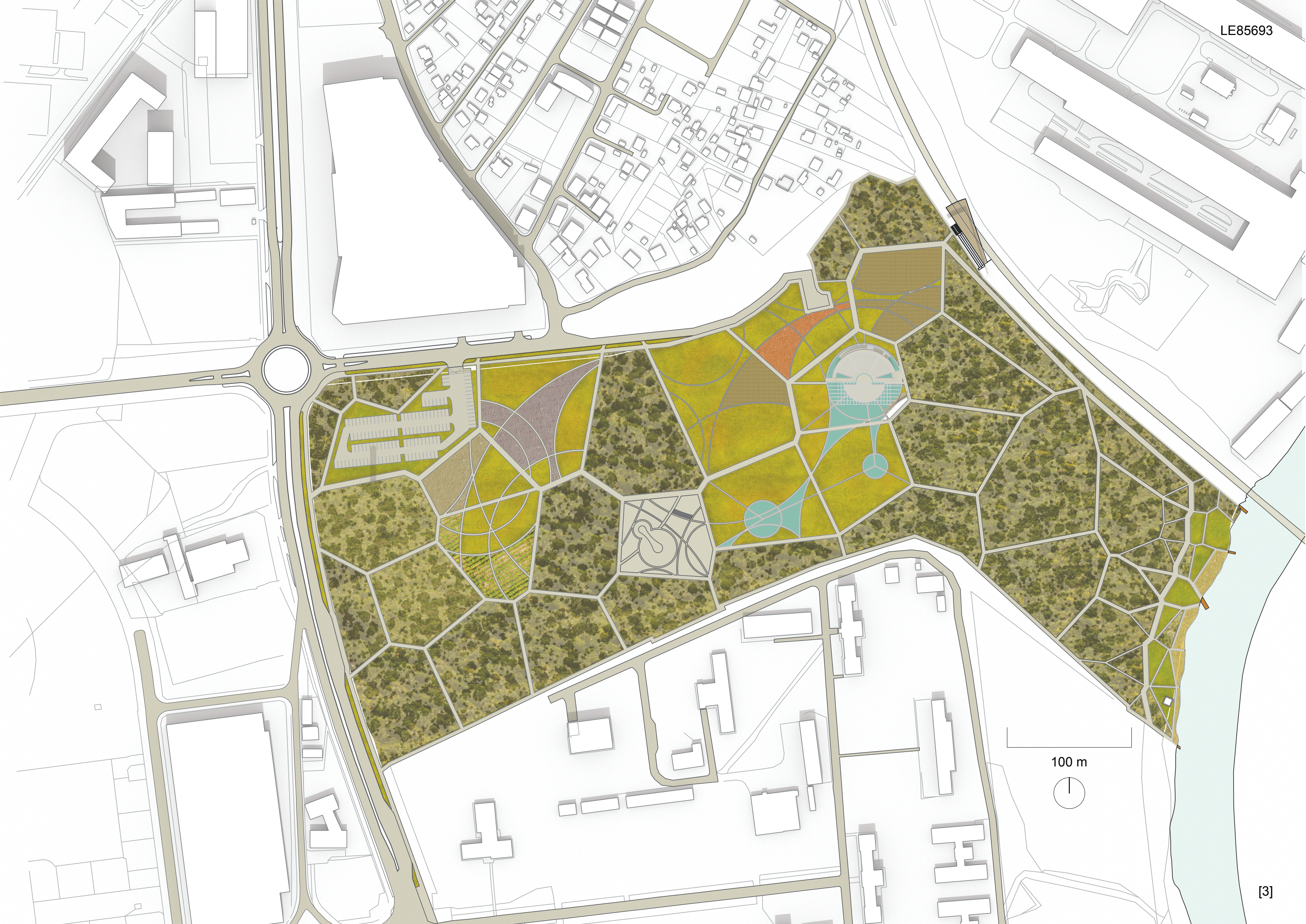
The heart of the park is an open-air theater with water mirrors that constitutes a contemporary urban landmark.

Vrbas

On the river coast is placed a leisure area with spaces for native vegetation alternated with intervention spaces of grass and granular beach.

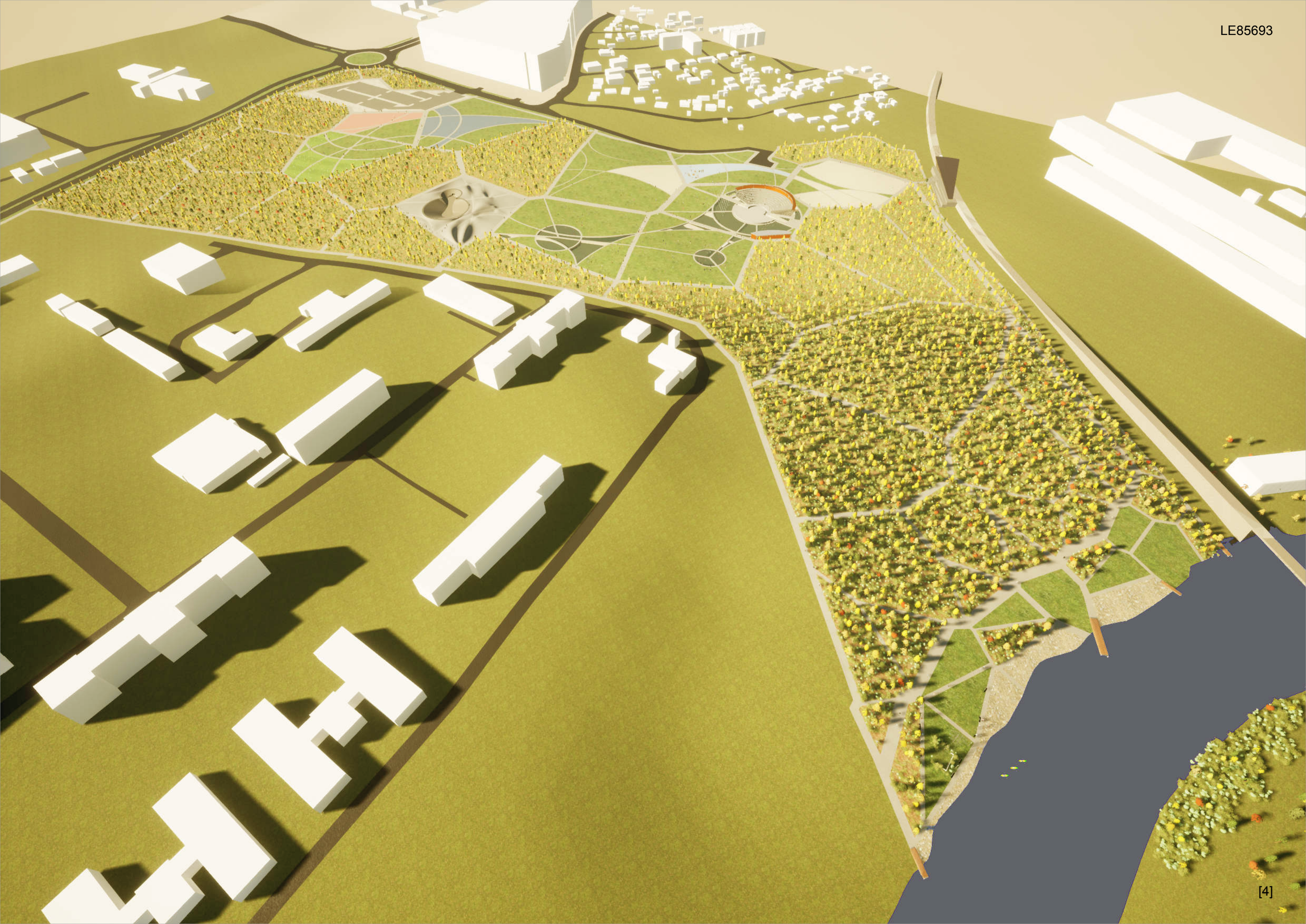
Soil

All earthworks required by the project are made without incorporating or removing soil out of the site. The park contains areas for soil phytoremediation.



100 m





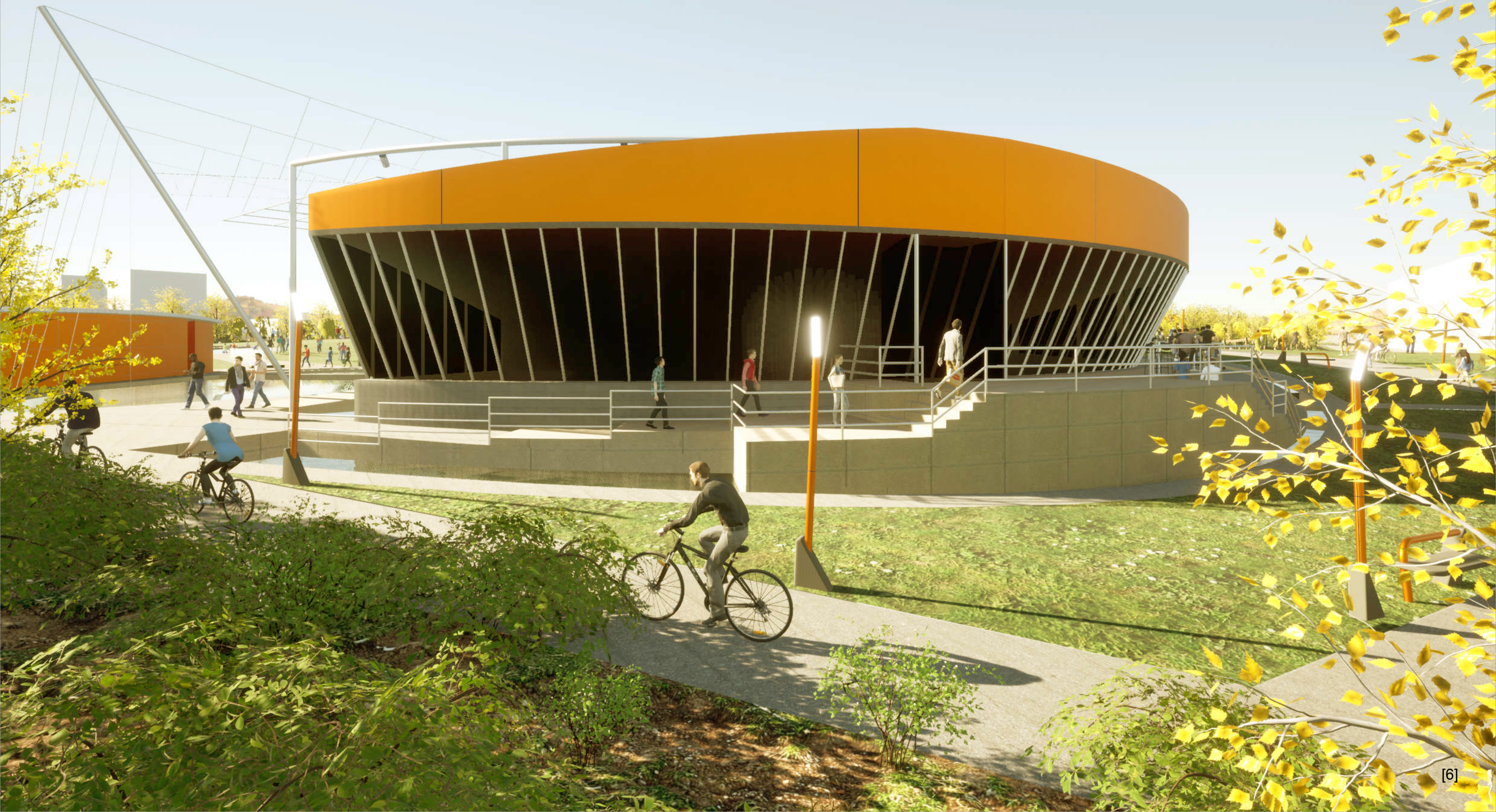
RIVER SIDE

The relation with the Vrbas river
balances nature, connectivity
and laizure.



THEATRE TERRACE

Private concessions at the theater terrace generate income for the maintenance of the park.



SKATE PARK

The diversity of activities
promotes intergenerational
encounters.



RAIN WATER

Different kinds of access to water to increase the experience of the day



SOIL

2280 m² dedicated to the phytoremediation of the existing soil.

PHYTOREMEDIATION
The contaminated soil is treated at the inside this sector.

SECTOR
12

WAYFINDING

A system of related pieces reinforces the visual identity.

TRAIN STATION

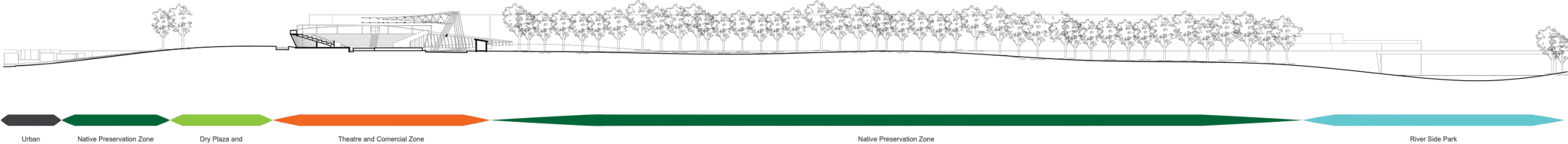
The esplanade emphasizes the park's connectivity.





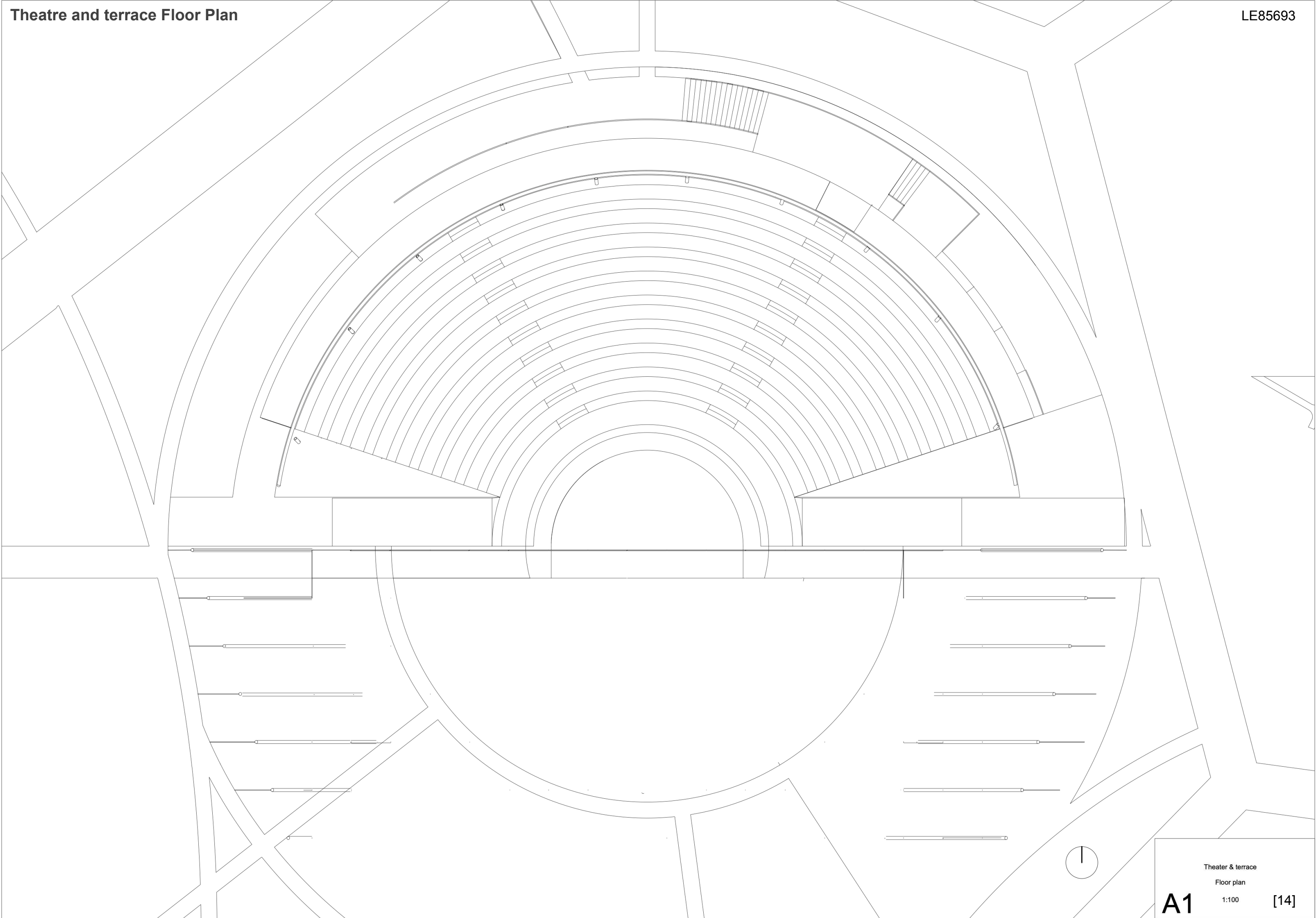
A2

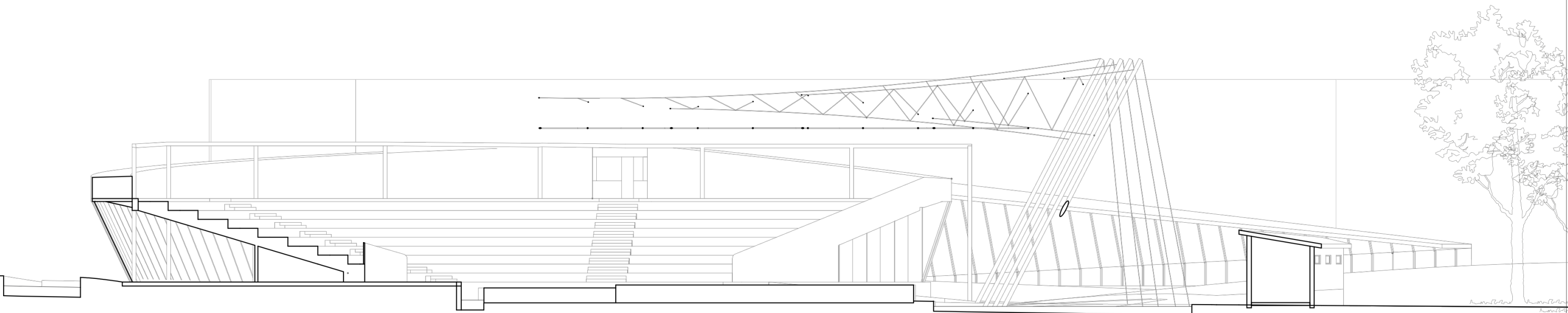
Site Plan
Floor plan
1:2500

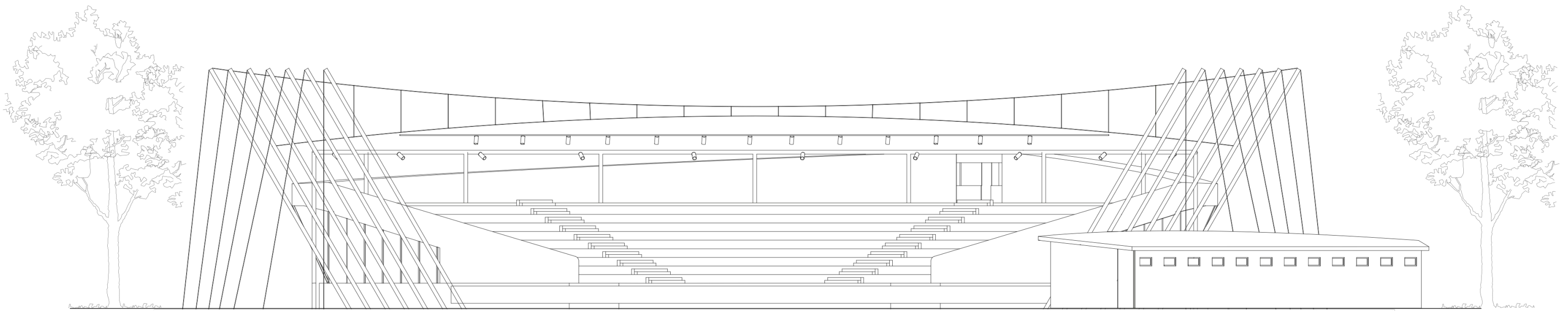


- Native Preservation Zone
- New Forest
- Picnick Area
- Dry Plaza
- Beach
- Phitoremation
- Kids Area
- Active Zone
- Skate Park
- Dogs Park
- Water Plaza
- Parking









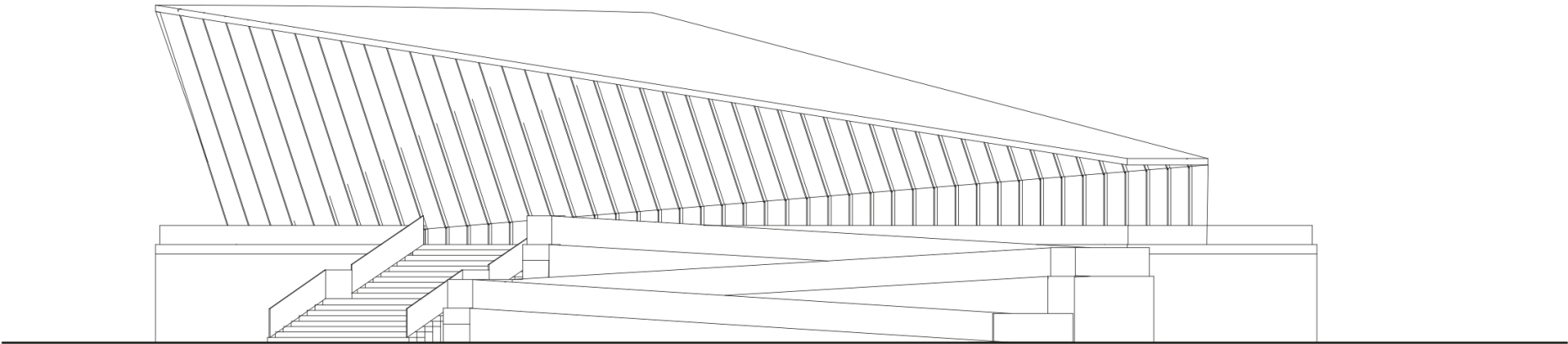


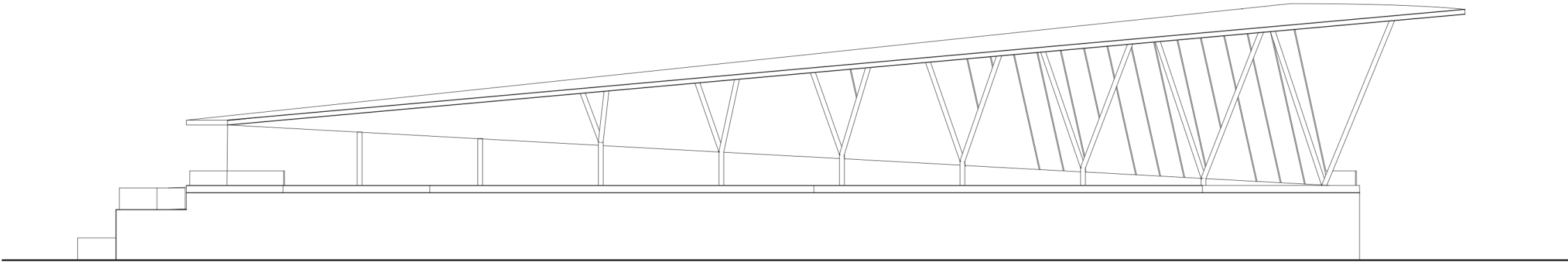
Train station
Floor plan

1:100

A1

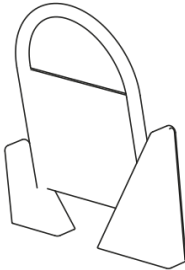
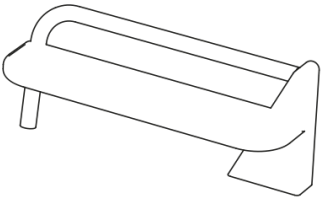
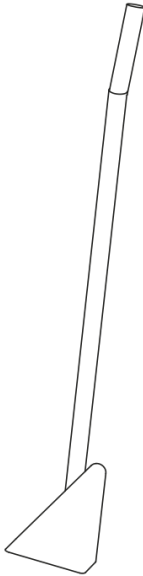
[17]



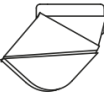
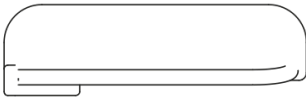


Furniture

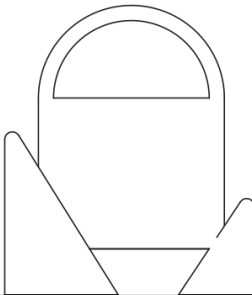
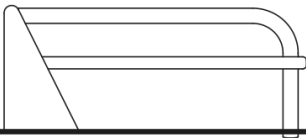
3D



Floor plan



View



Lights

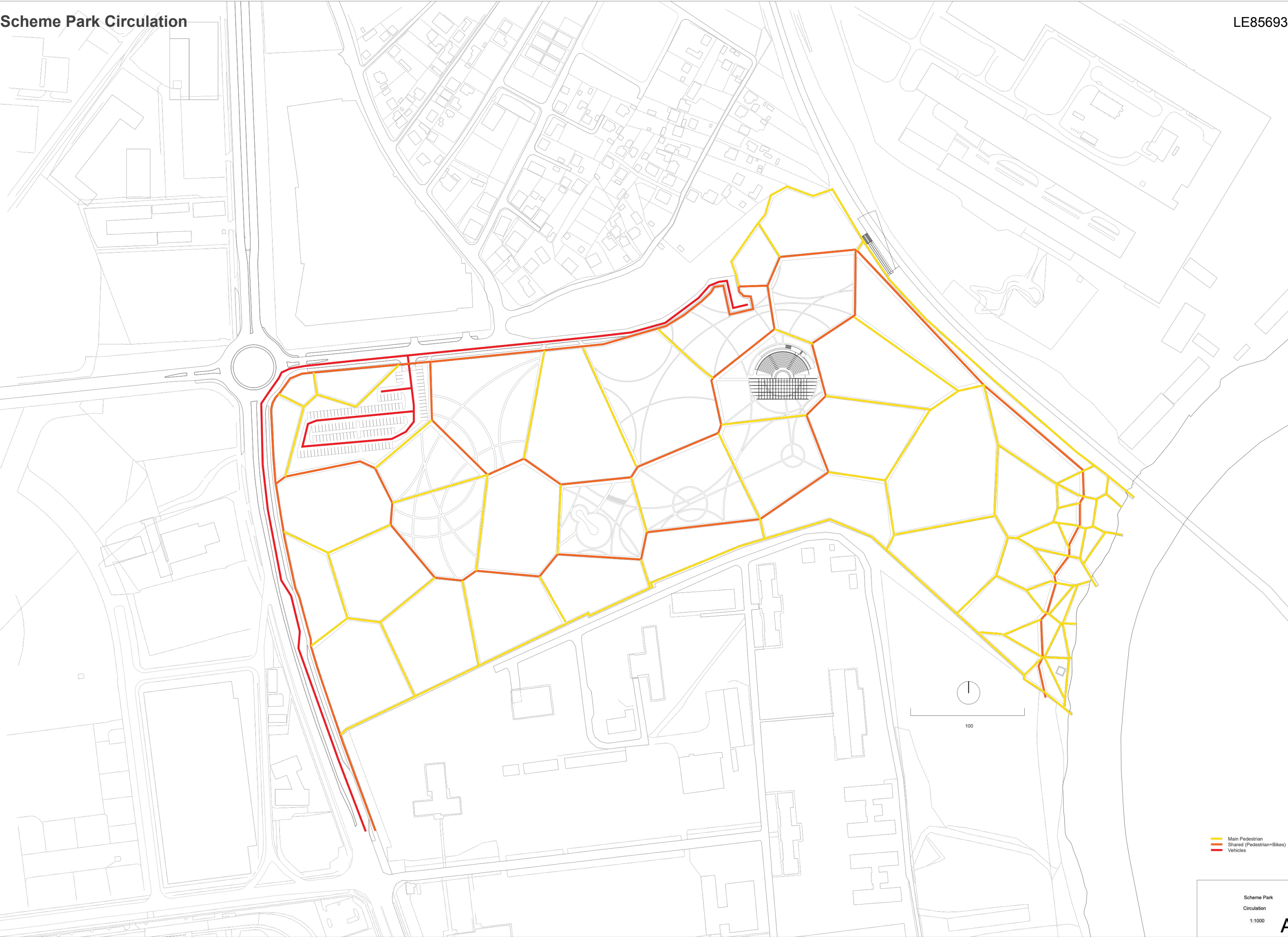
Banks

Informative

Map

A3

Furniture
System
1:100



Main Pedestrian
Shared (Pedestrian+Bikes)
Vehicles

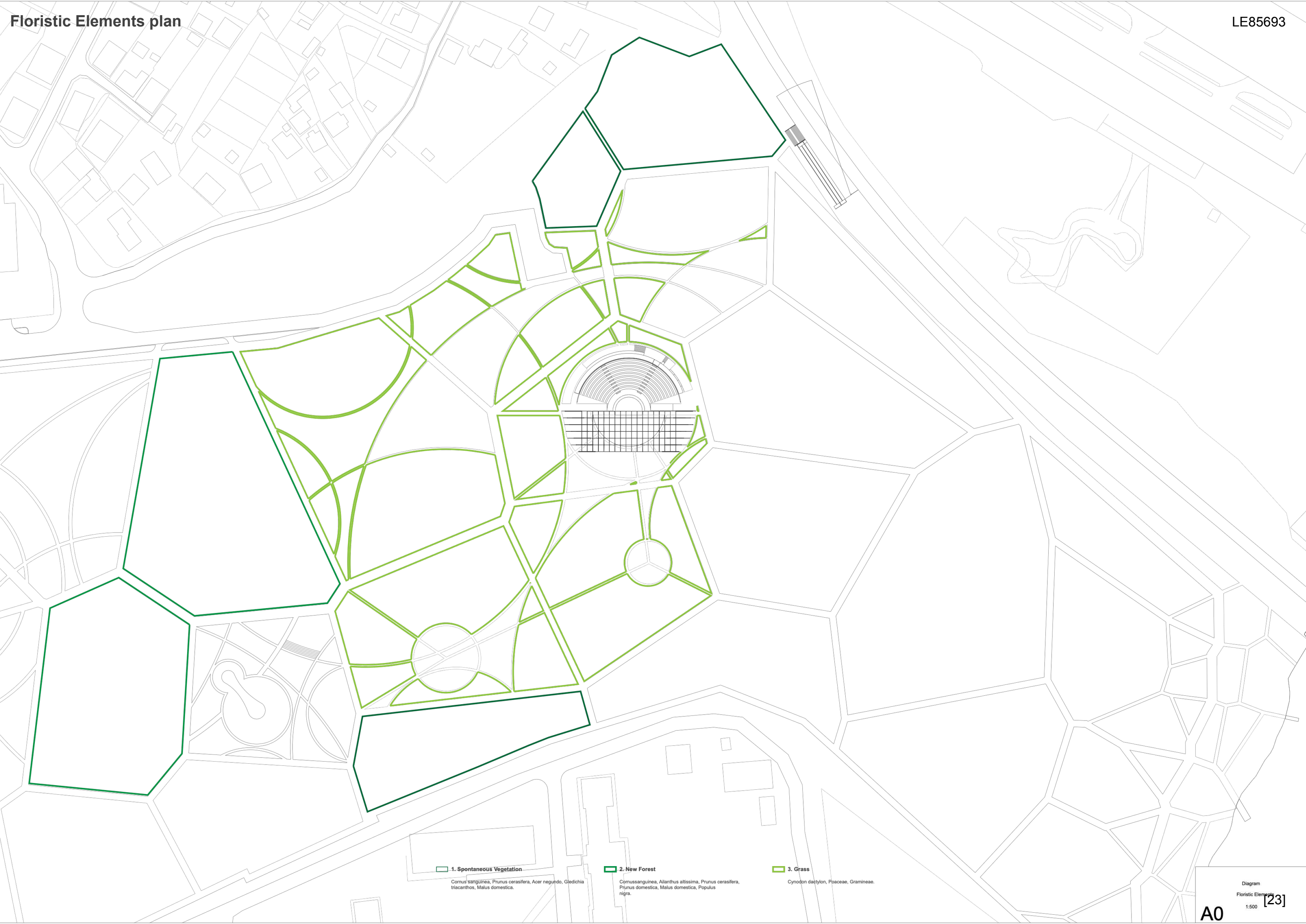


1. Spontaneous Vegetation

Cornus sanguinea, Prunus cerasifera, Acer negundo, Gledichia triacanthos, Malus domestica.
2. Phytoremediation

Brassica juncea L., Sorghastrum nutans, Helianthus Annuus L.
3. Grass

Cynodon dactylon, Poaceae, Gramineae.



1. Spontaneous Vegetation

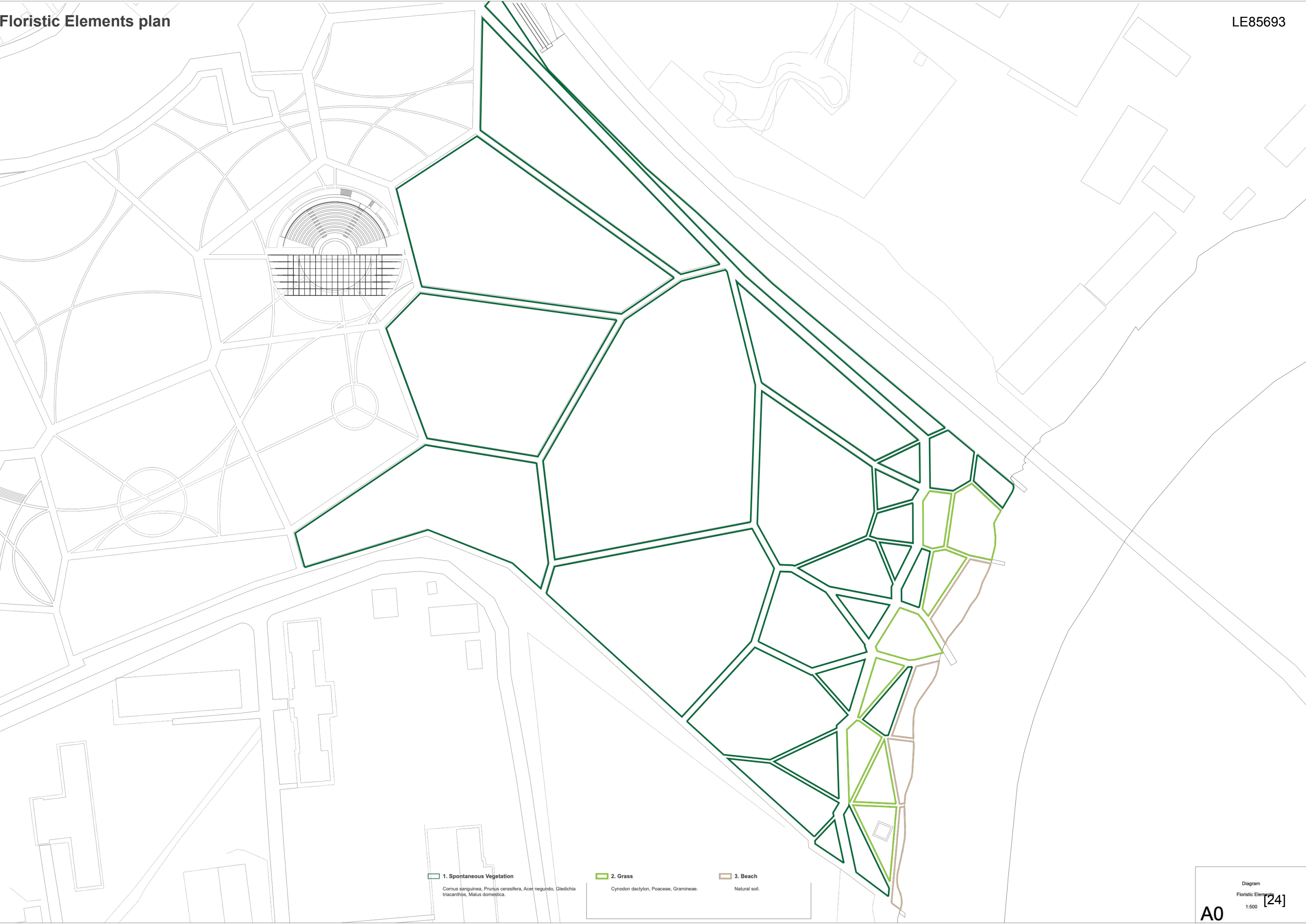
Cornus sanguinea, *Prunus cerasifera*, *Acer negundo*, *Gledichia triacanthos*, *Malus domestica*.

2. New Forest

Cornus sanguinea, *Alnus altissima*, *Prunus cerasifera*, *Prunus domestica*, *Malus domestica*, *Populus nigra*.

3. Grass

Cynodon dactylon, *Poaceae*, *Gramineae*.



1. Spontaneous Vegetation

Cornus sanguinea, Prunus cerasifera, Acer negundo, Gledichia triacanthos, Malus domestica.
2. Grass

Cynodon dactylon, Poaceae, Gramineae.
3. Beach

Natural soil.



- Native Preservation Zone
- New Forest
- Picnic Area
- Dry Plaza
- Beach
- Phytoremediation
- Kids Area
- Active Zone
- Skate Park
- Dogs Park
- Water Plaza
- Parking
- 1. Theatre
- 2. Train Station

the
stage
of riverside
life park
Banja Luka